



OFFICE PROFILE



ALIA AL-SAYEGH ENGINEERING CONSULTANTS

Contents:

- Introduction
- Briefly about ASEC
- Consultant's Firm Data
- Consultant's Experience Summary
- Project's Images

ALIA AL SAYEGH ENGINEERING CONSULTANTS is pleased to present this profile which presenting in brief the capabilities of the office to run big range of projects.

This profile outlines the capabilities of the office to win and run successfully large scale projects. Our experience includes:

- Landmark projects
- International projects
- Governmental projects

It is the policy of the office to establish fruitful cooperation with other consulting offices, real estate companies and project management companies in order to extend our services. At the same time **ASEC** remains THE PRINCIPAL DESIGNER AND MANAGES THE PROJECTS presented on our site or profile.

ASEC extended services include real estate management, large scale management and Design/Build special P.R to the satisfaction of our clients the careful team building along with the associates allow us benefit from the vast experience of both ASEC staff and associates for highly professional, well coordinated and timely manner and up to the best international standards.

We are dedicated to comprehensive application of GREEN BUILDING and smart design tools and whole building design. We made our mission to increase the awareness in energy efficient and environmentally friendly design.

Our extended Services are based on the cooperation we entered with international consultants with experience in the related innovative alternative energy solutions, sustainability and sports facilities. This shall enhance our capabilities.

ASEC had made A MISSION to work actively promoting and applying the GREEN BUILDING APPROACHES. We are happy to mention that we succeeded to convince our clients -GOVERNMENTAL AUTHORITY- to include SOLAR APPLICATIONS on some of their projects.

We have already approved our first building with SOLAR ENERGY APPLICATIONS (a governmental building – THE HIGHER INSTITUTE FOR ENERGY), once it is implemented it shall be THE FIRST "SOLAR HOUSE" IN KUWAIT.

On the way there is another governmental building approved as concept with a lot of green building approaches and solar applications. Our active and dedicated work was acknowledged by the fact that Eng. Alia is at the head of the newly established NATIONAL COMMITTEE FOR GREEN BUILDING CODES in Kuwait.

OUR LOCATION...

www.asec-kw.com



SALMIYA, ARABIAN GULF STREET,
EASA TOWER, 3A, KUWAIT.

TEL: +965 25717272 / 8282

FAX: +965 2571 9292

E-mail: admin@asec-kw.com - www.asec-kw.com



BRIEFLY ABOUT ASEC

ASEC - ALIA AL SAYEGH ENGINEERING CONSULTANTS is a Kuwaiti multi disciplinary consulting - design/build firm established in 2007. The office of **ASEC** is located in a prime location in Kuwait - Salmiya, Arabian Gulf Road, Essa Tower.

We, **ASEC**; are a very dedicated, experienced and innovative team in :

- IN THE ART OF ARCHITECTURE
- IN TECHNICAL ISSUES
- IN HIHGLY CUSTOMIZED DESIGN TO SUITE THE CLIENT'S NEEDS
- IN EFFECTIVE MANAGEMENT

We made our mission to achieve perfection in performance, innovative design at all times. We actively consider the values of ENVIRONMENT, CULTURE, HERITAGE AND HUMAN WELL BEING.

It is the policy of **ASEC** to Work in association with International Consultants. **ASEC** has fully developed in house computer system for all Microsoft office applications, CAD and imaging.

We are committed to full understanding and meeting the client's needs, considering the major desgin factors as function, forms, feasibility and timing. Though young in the market, **ASEC** has undertaken challenging development projects locally in kuwait and abroad.



SERVICES

www.asec-kw.com
www.aecick.com

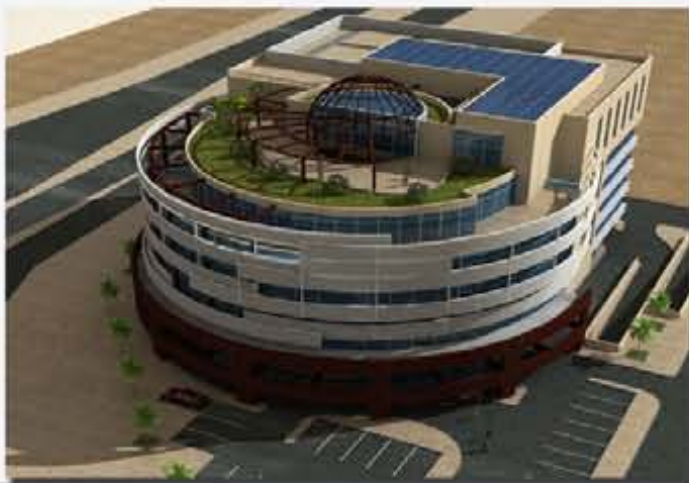
ASEC (in most of the cases) is acting as principal designer of the projects developed in cooperation with international consultants.

ASEC is capable to mobilize flexible international teams customized for the development of Large scale governmental and international projects including:

- Renewable energy sources and sustainability
- Leisure Sport, recreation and related special design and landscape

ASEC is capable of accomplishing the following:

- Feasibility Studies
- Proposal Design
- Concept Design
- Preliminary Design
- Working Drawings
- Tender documents
- Supervision



SERVICES

The office is capable of providing full range of services in the fields of:

- Urban Design and Master Planning
- Architectural Design
- Interior Design
- Tender and Construction Documents
- Construction Supervision and administration
- Engineering Disciplines Consultancy
- Project and Construction Management in cooperation with
- Project Management Companies
- Cost Management in Cooperation with a Number of Real Estate & Contracting Companies
- Value Engineering: ASEC is a member in the International Society of American Value Engineers
- Lighting Design
- Renewable energy applications in coopration with (HENERGY, INGESOLUM - and SENDEKIA Spain)
- Special Consultant - movable roofs (ESTUDIOARQUITECTURA)

In fact ASEC entered into an agreement for association with Spanish Consortium in the field of Design and Construction including 17 companies. Some of them are mentioned on this profile. This shall facilitate the management.



ASSOCIATED SERVICES

LEISURE & SPORTS FACILITIES

Among the members of the consortium, RFA leads everything related to the design of leisure and commercial buildings along with sport facilities and football stadiums.

RFA incorporates not only the latest tendencies in quality and functionality in sports design within its installations, but also seeks solutions there are compatible to and favors its use for commercial activities and amenities other than its primary function. The development of shopping centers requires a considerable amount of experience in this field together with a flexible and efficient approach to capture the developer's ideas into a reality that features functional spaces.

LANDSCAPE

Among the members of the consortium, LVEP leads everything related to landscape design. A multi – disciplined team working together to accomplish a common objective; a garden, a unique and different landscape, an architectonic space that is perfectly integrated with its surroundings.

All landscape projects are examples where also urbanism and architecture are involved and all of them have a common particularity; the natural elements Vegetal and mineral, always forming an axis that branches out, develops and converts the project into a reality; from a private garden, to a public plaza or hospital.



ASSOCIATED SERVICES

GREEN BUILDINGS

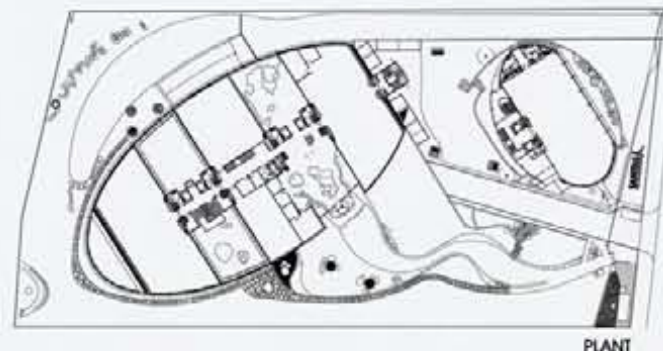
Among the members of consortium, Ortiz,leon leads everything related to the design of the building for lead certificated.

Ortiz.Leon arquitectos have a proven professional reputation because of their environmental approaches in the design of architecture.

The following are the relevant issues that Ortiz.Leon. arquitectos emphasize in all the projects and their surroundings: energy efficiency, materials and resources, indoor environmental quality, community issues, environment as personal commitment.

PHOTOVOLTAIC SOLAR TRACKERS

SENDEKIA SL is a specialized firm in research, innovation and development of products in the field of solar photovoltaic energy. The business lines are the following activities: product's development and optimization of installations: design and manufacture of solar trackers and solar pergolas.



SENDEKIA www.sendekia.com



www.asec-kw.com



Consultant Name: Alia Al Sayegh Engineering Consultants

1	Name:	Alia Al Sayegh Engineering Consultants (ASEC)	5	Narrative Description of the Firm:
	Address:	Salmiyah, Arabian Gulf Street, Easa Towers Third Floor A		
2	Telephone:	2571 7272 - 2571 8282		
	Fax:	2571 9292		
	W-Site:	www.asec-kw.com		
	E-Mail:	admin@asec-kw.com		
3	Year Established:	2007		
4	Principal Members of the Firm:	Eng. Alia Abdul Aziz Al-Sayegh Managing Director Arch. Maryann Alexieva Deputy and Principal Architect		
				(ASEC) Alia Al Sayegh Engineering Consultants is a Kuwaiti multi-disciplinary consulting/design firm established in 2007. Perfection in all architectural and engineering aspects, is the attribute that describes ASEC's approach in commitment to client service. ASEC is Dedicated to Achieve Perfection of the Performance. Innovative design understanding and considering the Values Of The Environment, Culture, Heritage And Humanism. It is the policy of ASEC to work in association with International Consultants. ASEC has fully developed in house computer system for all Microsoft office applications, CAD and imaging. We are committed to full understanding and meeting the client's needs, considering the major design factors as function, forms, feasibility and timing. Though young in the market, ASEC has undertaken challenging development projects locally in Kuwait and abroad. ASEC can follow to PERFECTION different STYLES to customize the architectural design according to our CLIENTS wish. ASEC, by the expertise staff and through a number of joint ventures, with professional international consultants, has experience in all kinds of buildings. Commercial, Residential, Religious, Hospitality, Cultural, Educational, Mixed use, Offices, Governmental, Interior design, Medical. ASEC is proud to attract highly qualified and dedicated professionals and international consultants for each project. We build our strength on the integrated previous experience of each member of the team. The office is capable of providing full range of services in the fields of: Urban Design and Master Planning, Architectural Design, Sustainable Design & Green Buildings Consultancy, Interior Design - Tender and Construction Documents, Construction Supervision and administration, Engineering Disciplines, Consultancy, Project and Construction Management in cooperation with Project Management Companies, Cost Management in Cooperation with a Number of Real Estate & Contracting Companies, Value Engineering: ASEC is a member in the International Society of American Value Engineers, Lighting Design. ASEC was the first Kuwaiti Engineering Consultancy who registered with US Green Building Council-LEEDS (USGBC) and with The Middle East Centre for Sustainable Development (Lighting Academy in Germany). ASEC succeeded to establish International Joint Ventures with Prominent Figures, such as: Akademie Licht Al-Bayaty Architects- UAE, Drees & Sommer - Germany, Architekturburo Kuhnlein - Germany, Omero Marchetti - Architect, Latina - Italy, AJZ Engineering, ARCADIS.

Consultant Name: Alia Al Sayegh Engineering Consultants

PREVIOUS EXPERIENCE (Last 5 Years)										
PROJECTS	NO.	CLIENT	PRIMARY ROLE	BUILDING AREA M2	TOTAL COST by Million KD	PROJECT DURATION		BUILDING TYPE	LOCATION	
NAME						FROM	TO		GCC	OTHERS
MAIN CONSULTANT : Alia Al Sayegh Engineering Consultants (ASEC)	1	Orchid Real Estate Company	Main Consultant & Owner Representatives	12,500	12	2007	2011	Commercial	—	Germany
	2	Dr. Abdul Reda Lari	Design & Supervision	4,500	2	2009	2012	Medical Clinics	KWT	—
	3	Kuwait Prospects Real Estate	Design	8,000	4.5	2009	2012	Mix Use	Oman	—
	4	Public Authority for Applied Education & Training	Design & Supervision	14,000	3.5	2009	2012	Educational & Offices	KWT	—
	5	Kuwait Prospects Real Estate	Design	13,000	2	2008	2009	Residential	Oman	—
	6	GRM LTD , Hristo Trendor	Design	240,000	30	2009		Mix Use	—	Bulgaria
	7	Naji Al-Abdul Hadi Consultancy	Interior Design	11,000	30	2008	2010	Mix Use	KWT	—

MAIN CONSULTANT : Alia Al Sayegh Engineering Consultants (ASEC)

Consultant Name: Alia Al Sayegh Engineering Consultants

PREVIOUS EXPERIENCE (Last 5 Years)										
PROJECTS	NO.	CLIENT	PRIMARY ROLE	BUILDING AREA M2	TOTAL COST by Million KD	PROJECT DURATION		BUILDING TYPE	LOCATION	
NAME						FROM	TO		GCC	OTHERS
MAIN CONSULTANT : Alla Al Sayegh Engineering Consultants (ASEC)	8	Falah Al-Nemran	Concept Design	12,500	1	2009		Administration	KWT	—
	9	Oman Prospects Company	Design	9,500	4	2009	2011	Administration	Oman	—
	10	Touristic Enterprises Company	Interior Design	600	0.1	2009	2010	Commercial	KWT	—
	11	Al Amanah United Holding	Design & Supervision	14,000	3.5	2009	2012	Administration	Qatar	—
	12	National Guards of Kuwait	Proposal	1,800	0.5	2008		Administration	KWT	—
	13	Iraqi Embassy in Kuwait	Interior Design			2007	2008	Offices	KWT	—
	14	Public Authority for Applied Education & Training		5,000	3	2009		Educational	KWT	—
	15	Ministry of Public Work	Design & Supervision	4,670	5	2009		Administration	KWT	—
	Office Building, Farwaniyah									
	Salalah Jewel Office Building									
	AlBahhar Restaurant									
	Office Building, Energy City									
	Office Building, National Guards									
	Headquarter of Iraqi Embassy									
	New Extension Buildings									
E.P.W.D & B.O.T Building										

MAIN CONSULTANT : Alia Al Sayegh Engineering Consultants (ASEC)

ALIA AL-SAYEGH
MANAGING DIRECTOR

MARIANA ALEXIEVA
Deputy Manager - Principal Designer

MOHAMAD TALAAT
PROJECTS MANAGER

PROJECTS COORDINATOR
QUALITY CONTROL MANAGER

Association International Companies

CIVIL & STRUCTURAL

Senior Structural Engineer
Senior Civil Engineer
Site Surveyor
Senior Traffic Engineer

ARCHITECTURE & INTERIOR

Space Programmer
Senior Architect
Urban Planner
S.Interior Designer
Landscape Specialist
Graphic Designer

CONTRACT & DOCUMENTS

Senior Quantity Surveyor
CSI Specification Writer
Report-Writer Specialist

OTHER SPECIALISTS

Acoustical Design Specialist
Shelter Specialist
Automation Specialist
Green Buildings Specialist

ELECTRICAL ENGINEERING

Senior Electrical Engineer

ELECTRICAL SPECIALISTS

Smart Building Specialist
Audio-Visual Specialist

MECHANICAL ENGINEERING

Senior Mechanical Engineer
Senior HVAC Engineer
Plumbing Engineer

TECHNICAL SUPPORT STAFF & CAD COMPUTER SERVICES

ARCHITECTURE

www.asec-kw.com

For us in **ASEC** ARCHITECTURE is not just another job, it is a mission.
We believe that Architecture is not only buildings, but the ART we live.

ASEC is dedicated to design for better LIFE of our clients.

ASEC is dedicated to PERFECTION in performance.

ASEC work hard to create INNOVATIVE design.

ASEC design with true UNDERSTANDING of the client.

ASEC design is based on values of nature culture heritage,
and well being. For us these are not just word.

We in **ASEC** put spirit, mind, and heart in our work.



OUR VISION

ASEC can follow to PERFECTION different STYLES to customize the architectural design according to our CLIENTS wish.

Though “young” on market, **ASEC** achieved state of art employment policies and development strategies so that from the very beginning it is benefiting from the rich experience and expertise of the staff and the international joint ventures.

ASEC, by the expertise staff and through a number of joint ventures with professional international consultants, has experience in all kinds of buildings:

- Commercial
- Residential
- Religious
- Hospitality
- Cultural
- Mixed use
- Offices
- Governmental
- Interior design

ASEC is proud to attract highly qualified and dedicated professionals and international consultants for each project.



AFFILIATIONS

www.asec-kw.com

- Kuwait Society of Engineers.
 - Union of Kuwait Engineering Offices and Consultancy Houses.
 - Affiliated Membership in American Institute of Architects.
 - International Society of American Value Specialists (SAVE-Int.):
 - U.S. Green Building Council (LEEDS):
 - Construction Specifications Institute (CSI)
 - National Society of Professional Engineers (NSPE)
 - American Society of Civil Engineers (ASCE)
 - Middle East Center for Sustainable Development
 - National Common of Builders Code of Kuwait
 - * Green building technology team
(Eng. Alia is Chair of the above)
 - Bream - UK
- ASEC is in the final stages off obtaining license as of Bream green building assesor company.



JOINT VENTURES / COOPERATION :

www.asec-kw.com

- **Regierungsbaumeister SCHLEGEL**
- **ARCADIS DEUTSCHLAND GMBH**
- **Drees & Sommer - Germany**
- **Akademie licht (lighting Academy in Germany)**
- **Al-Bayat Architects - UAE**
- **Architekturburo Kuhnlein - Germany**
- **Omero Marchetti - Architect, Latina - ITALY**
- **Local Associations :**
 - **ESG**
 - **Al-Jazera Consultants**
- **Dr. Veselina Troeva - Arch. Bulgaria**
- **Aecick - Consortium of International Consultants**
- **MNEVIS Project Management (Local Agent & Partner for Aecick)**



CLIENTS LIST:

ASEC was honored to provide services for many distinguished clients:

- Ministry of Public Works - Kuwait
- Public Authority for Applied Education & Training - Kuwait
- Touristic Enterprises Company - Kuwait
- Orchid Real Estate - Germany
- Heritage Village Real Estate - Kuwait
- Dr.Abdulreda LARI - Kuwait
- Iraqi Embassy in Kuwait
- United Prospects Company - Dubai
- Municipality of Petrich- Bulgaria



NEW POST HOTEL

ROLE Main Consultant & Owners Representative

Building Area 12,500 m²

Total Cost 12 million Dinars

Location Germany

Project Description:

The New Post Hotel is located in Bavaria - Germany. The Hotel is a specialized spa in health and beauty having facilities for post-surgical physical rehabilitation. The project is divided into two different parts: first, the redesign and renovation of the old historic post hotel and second, is the development and construction of the new buildings which are artistically linked with the historic one. The area is approximately 12,000 m² which shall include more than 100 keys of 5-star hotel facilities, 4 restaurants, business center, multipurpose halls, concert hall, in addition to the clinical and beauty centers - ASEC Role: Principle Architectural Design, Owner representative and Project Administration.



HERITAGE VILLAGE

ROLE	Interior Design
Building Area	11,000 m²
Total Cost	30 Million Dinars
Location	Kuwait

Project Description:

The Heritage Village Project is located on the Arabian Gulf Road in Sharq Area-Kuwait with a total area of 82, 000 m². This unique project is bringing to life the heritage spirit of Kuwait to present. The early typical architecture of Kuwait villages are beautifully repeated in this location but yet, the up to date luxury and developed technologies are taken into consideration in the special interior design. The project includes a five star hotel with luxury ballrooms, 3 restaurants and the spa health club. The project also includes museums & commercial areas. Heritage Village Project is considered as one of the most important BOT projects in Kuwait for many reasons such as reviving the early spirit of Kuwait life and boosting the tourism activity in the region. Office Role: Interior Design



AL-SEEB PEARL

ROLE	Design
Building Area	13,000 m²
Total Cost	2 Million Dinars
Location	Oman

Project Description:

Al-Seeb Pearls is one of ASEC Housing Development Projects in Oman, The project is located in Muscat - Al-Sheradi block of Al-Seeb Governorate. Al-Sleeb Pearls is only 15 minutes driving from muscat Airport and 5 minutes driving from the beautiful beach of Muscat and facing the Martme Road. The project development includes 35 villas, internal circulation roads, infrastructure and landscaped areas.



ALBAHHAR RESTAURANT

ROLE Interior Design

Building Area 600 m²

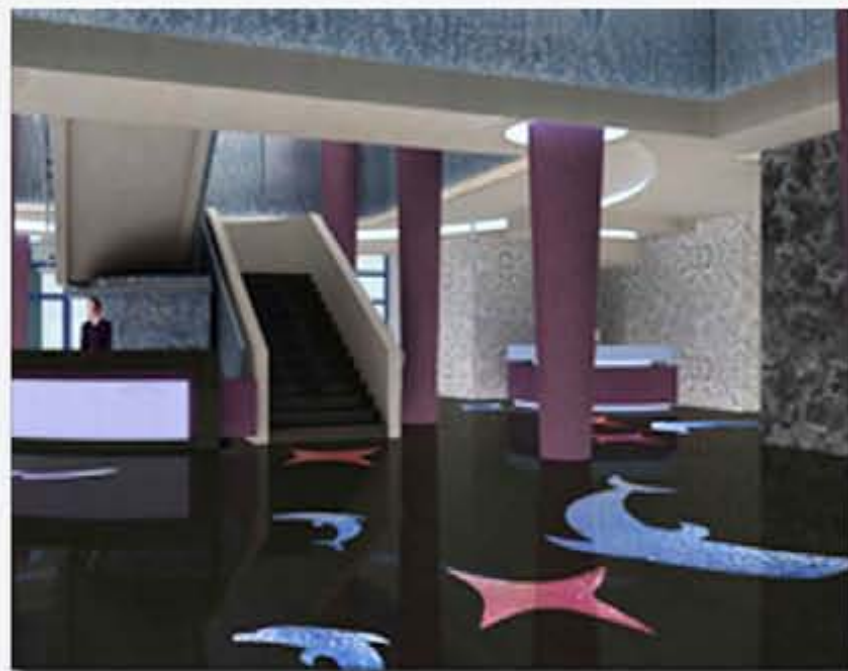
Total Cost .1 Million Dinars

Location Kuwait -KHIRAN RESORT MAIN RESTAURANT

Project Description:

Close your eyes and imagine yourself hugging the warm sea waves with its clear pure water. Imagine that you dive deeply and enjoy the colorful sea life. This was the design idea of Bahhar Restaurant.

Bahhar Restaurant is located in Khiran Resort occupying a strategic location in the south part of the resort, facing a magnificent sea view and near Khiran Marina



LARI MEDICAL CENTER

ROLE	Design & Supervision
Building Area	4,500 m ²
Total Cost	2 Million Dinars
Location	Kuwait -(prime location at hawalli)



WAVY BAY COMPLEX

ROLE	Design
Building Area	8,000 m²
Total Cost	4.5 Million Dinars
Location	Oman -prime location at soor costel line

Project Description:

Wavy Bay Touristic project has been uniquely designed to emphasize the spirit and shapes of the sea waves, providing complete luxurious facilities including 5 stars hotel, shopping mall, spa, cinemas, restaurants, in addition to the landscaped coast and the marine.

The design is taking into consideration the "Green Building" techniques and principles to create an environment-friendly complex.



BELASITZA TOURISTIC COMPLEX

ROLE MASTER PLANNING AND CONCEPT DESIGN

Plot Area 420,000 m²

Total Cost 30 Million Dinars

Location Bulgaria

DESCRIPTION A land mark international complex exploring the unique nature and location near to the south-west border of bulgaria.

INCLUDES Fully developed sports zones olimpic sizes of football and athletic stadium.
Tennis, Hand Ball, Basket Ball and Volly Ball. Olympic playgrounds (indoore and out outdoor) equestrian olympic site stadium and training stadium.
Water sports olympic sites (indoore and outdoor)
Goulf Course (18 holes)
The rest of the functions: Hotel Complex,Villas and Congress Centre are value to the sportsfacilities providing accomodation, leisure, catering and green areas. The whole complex is developed as sustainable environment and based on renewable energies applications.



BELASITZA TOURISTIC COMPLEX

ROLE	MASTER PLANNING AND CONCEPT DESIGN
Plot Area	420,000 m²
Total Cost	30 Million Dinars
Location	Bulgaria



New Extension Buildings For the PAAET - CTS COLLEGE

ROLE Main Consultant (Design & Supervision)

Building Area 2,000 m² & 3,000 m²

Total Cost 3 million Dinars

Location Kuwait - Shuwaikh



New Extension Buildings For the PAAET - HIE COLLEGE

ROLE Main Consultant (Design & Supervision)

Building Area 2,000 m² & 3,000 m²

Total Cost 3 million Dinars

Location Kuwait - Shuwaikh



MINISTRY OF PUBLIC WORK - EPWD & BOT new building

ROLE Main Consultant (Design & Supervision)

BUILDING AREA 5000 m

TOTAL COST 12 Million Dinars

LOCATION KUWAIT - SOUTH SURRA



MISCELLANEOUS PROJECTS

www.asec-kw.com





THE AMERICAN INSTITUTE OF ARCHITECTS

DECLARES THAT

Alia Abdul Aziz Al-Jayegh

IS ADMITTED TO ALLIED INDIVIDUAL MEMBERSHIP IN
THE AMERICAN INSTITUTE OF ARCHITECTS AND IS ENTITLED
TO EXERCISE AND ENJOY ALL THE RIGHTS AND PRIVILEGES
OF MEMBERSHIP AS PRESCRIBED IN THE BYLAWS.

DATED APRIL 22, 2008


PRESIDENT


SECRETARY

Associate Value Specialist

Alia Abdul Aziz Al-Sayegh

Having met all the requirements of Value Experience and Education required for professional competence is registered as an Associate Value Specialist by the Certification Board of SAVE International.

Effective Date: April 2005



Drew M. Alkane, C.V.S.
Chairman, SAVE International Certification Board

John P. Johnson
President, SAVE International

Certification No. 20050548



U.S. Green Building Council

ALIA ALSAYEGH ENGINEERING CONSULTANTS MEMBER SINCE 2008

THE U.S. GREEN BUILDING COUNCIL IS THE NATION'S FOREMOST COALITION OF LEADERS WORKING TO TRANSFORM THE WAY BUILDINGS AND COMMUNITIES ARE DESIGNED, BUILT AND OPERATED, ENABLING AN ENVIRONMENTALLY AND SOCIALLY RESPONSIBLE, HEALTHY, AND PROSPEROUS ENVIRONMENT THAT IMPROVES THE QUALITY OF LIFE.

Rebecca L. Flora, Chair

S. Richard Fedrizzi, President, CEO and Founding Chairman

Certificate of Participation

This is to certify that

Mariana Alexieva

has completed the training and internship program titled

The Role of Public Administrators in Housing Delivery

held in the United States of America

May 14, 1994 to June 28, 1994

The program was cosponsored by:

United States Agency for International Development, Washington, D.C.

Cooperative Housing Foundation, Washington, D.C.

Kentucky Housing Corporation, Frankfort, Kentucky

Maryland Department of Housing and Community Development, Crownsville, Maryland

Richmond Redevelopment and Housing Authority, Richmond, Virginia

Washington State Housing Finance Commission, Seattle, Washington

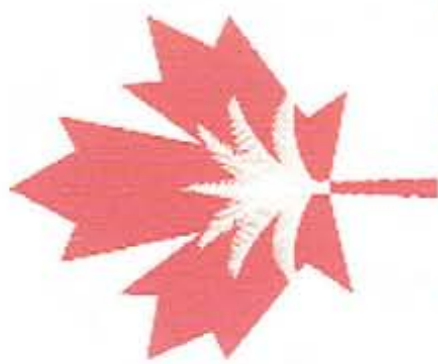
CHF

Cooperative Housing Foundation

Michael E. Doyle
President and Chief Executive Officer

Judith A. Hermanson
Executive Vice President for International Programs

Certificate of Participation



الجامعة الكندية دبي
CANADIAN UNIVERSITY OF DUBAI



Green Building
Sustainable Business Consultants

Maryann Hristosova Alexieva
has participated in the Architecture & Daylight
Conference on 29. September 2009

Dubai, September 2009

A. Florian Techel

Florian Techel
Chair of Architecture & Interior Design
Canadian University of Dubai



المهندسين

مجالس ما أحياء ورقي



تشهد جمعية المهندسين الكويتية ناز
المهندسة / ماريانا هريستوسوفنا أليكسييفا

قد حصلت على لقب

مهندس استشاري

في تخصص الهندسة المعمارية - التصميم

On the recommendation of the Engineers Chartering Council
the Kuwait Society of Engineers conferred upon

Eng. Mariana Hristoss Alexieva

the title of

Consultant Engineer

In Design - In The field of Architecture

رئيس

جمعية المهندسين الكويتية

President of Kuwait Society Of Engineers

رئيس

مجلس تاهيل وتصنيف المهندسين

President of Engineers Chartering Council



2007/02/11

نخورد لي الكويت

رئيس مجلس تاهيل وتصنيف المهندسين
President of Engineers Chartering Council

www.kse.org.kw

Consultant Name: Alia Al Sayegh Engineering Consultants

PREVIOUS EXPERIENCE (Last 5 Years)										
PROJECTS	NO.	CLIENT	PRIMARY ROLE	BUILDING AREA M2	TOTAL COST by Million KD	PROJECT DURATION		BUILDING TYPE	LOCATION	
NAME						FROM	TO		GCC	OTHERS
MAIN CONSULTANT : Alla Al Sayegh Engineering Consultants (ASEC)	1	Orchid Real Estate Company	Main Consultant & Owner Representatives	12,500	12	2007	2011	Commercial	–	Germany
	2	Dr. Abdul Reda Lari	Design & Supervision	4,500	2	2009	2012	Medical Clinics	KWT	–
	3	Kuwait Prospects Real Estate	Design	8,000	4.5	2009	2012	Mix Use	Oman	–
	4	Public Authority for Applied Education & Training	Design & Supervision	14,000	3.5	2009	2012	Educational & Offices	KWT	–
	5	Kuwait Prospects Real Estate	Design	13,000	2	2008	2009	Residential	Oman	–
	6	GRM LTD , Hristo Trendor	Design	240,000	30	2009		Mix Use	–	Bulgaria
	7	Naji Al-Abdul Hadi Consultancy	Interior Design	11,000	30	2008	2010	Mix Use	KWT	–

MAIN CONSULTANT : Alia Al Sayegh Engineering Consultants (ASEC)

Consultant Name: Alia Al Sayegh Engineering Consultants

PREVIOUS EXPERIENCE (Last 5 Years)										
PROJECTS	NO.	CLIENT	PRIMARY ROLE	BUILDING AREA M2	TOTAL COST by Million KD	PROJECT DURATION		BUILDING TYPE	LOCATION	
NAME						FROM	TO		GCC	OTHERS
MAIN CONSULTANT : Alia Al Sayegh Engineering Consultants (ASEC)	8	Falah Al-Nemran	Concept Design	12,500	1	2009		Administration	KWT	—
	9	Oman Prospects Company	Design	9,500	4	2009	2011	Administration	Oman	—
	10	Touristic Enterprises Company	Interior Design	600	0.1	2009	2010	Commercial	KWT	—
	11	Al Amanah United Holding	Design & Supervision	14,000	3.5	2009	2012	Administration	Qatar	—
	12	National Guards of Kuwait	Proposal	1,800	0.5	2008		Administration	KWT	—
	13	Iraqi Embassy in Kuwait	Interior Design			2007	2008	Offices	KWT	—
	14	Public Authority for Applied Education & Training		5,000	3	2009		Educational	KWT	—
	15	Ministry of Public Work	Design & Supervision	4,670	5	2009		Administration	KWT	—

MAIN CONSULTANT : Alia Al Sayegh Engineering Consultants (ASEC)